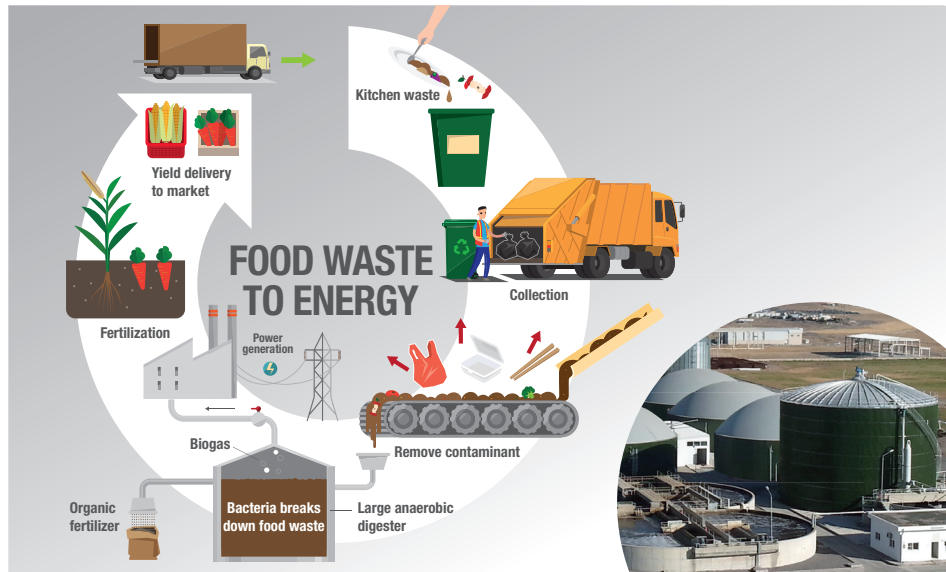
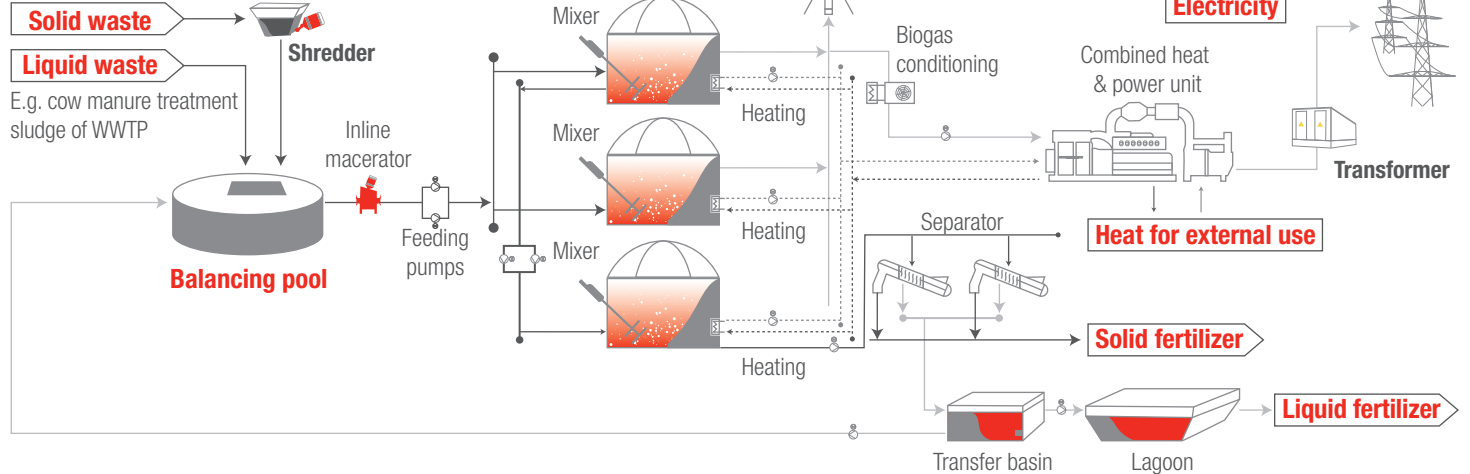


WASTE TO ENERGY

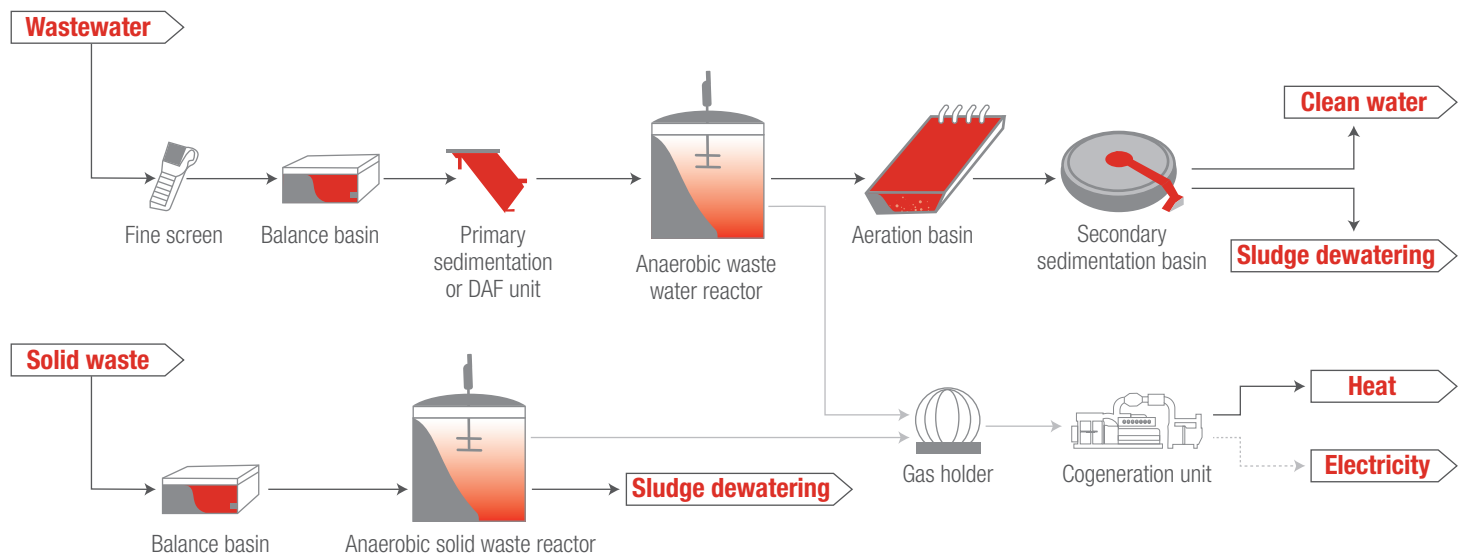


Waste acceptance & balancing system

E.g. residues of beets, potatoes & slaughterhouse waste

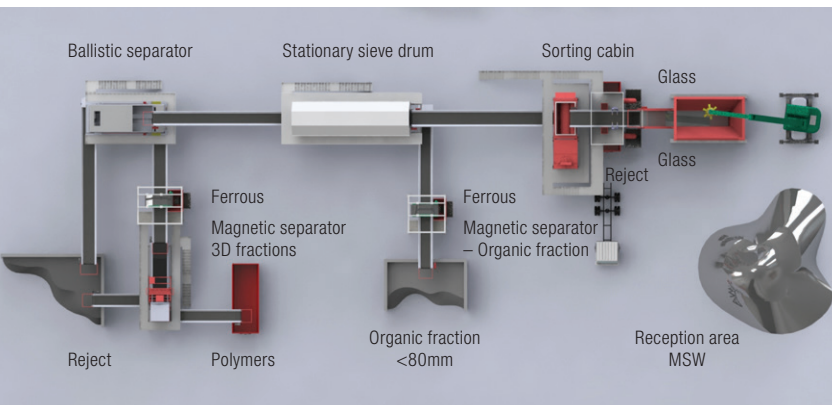


Energy efficient integrated WWTP & organic solid waste management concept



TYPICAL LAYOUT FOR MIXED SOLID WASTE

Material recovery facility



Provided by BIANNA Recycling 

SUPPLEMENTARY TECHNOLOGY

OPTIMIZING YOUR PRODUCTS TO THE DEMANDS OF THE MARKET

Conditioning of the biogas

- Biological desulphurization & dewatering
- Biogas upgrading to CNG / LPG
- By product CO₂ & H₂ for the industry

Different usage of biogas

- Heat → hot water or steam boiler
- Electricity & heat → combined power & heat gas engine, turbine

Usage of heat

- Cooling with absorption chiller
- Thermal drying

Fertilizer production from solid digestate

- Bio-drying of solid digestate
- Production of ammonia sulfate in combination with exhaust air & liquid digestate treatment

Wide possibility of organic waste input streams

- De-packing of expired food waste
- De-stoning of chicken dung with automatic removal before anaerobic treatment
- Optimized waste storage



Renewable energy



Zero-waste



Convert waste to energy



Biogas



Green infrastructure

INDUSTRIAL APPLICATIONS

Soft & hard drink industry

- Highly COD polluted wastewater
- Residues of beverage production

Dairies

- With whey polluted wastewater
- Agricultural residues from milk supplier, cow dung & straw

Potato & corn chips production industry

- With starch polluted wastewater
- Residues of potatoes & corn from production

Slaughterhouses

- With blood & fat polluted wastewater
- Residues of meat

Waste management industry

- Organic waste from MSW
- Food waste from restaurants & canteens
- Expired food (packed/unpacked)

Vegetable & fruit industry

Sugar & candy production industry

Pulp & paper industry



OUR SCOPE OF SERVICES

- Process flow analysis & feasibility study
- Basic & detailed engineering
- Machinery selection & installation
- Project & construction management
- Commissioning & training
- Service & maintenance

CONTACT US TO LEARN MORE

Rieckermann (India) Private Limited
Office No. 501, 5th Floor, A Wing, Aurus Chambers
Shivram Seth Amrutwar Marg, Worli, Mumbai 400013, India

Vishwas Joshi | Director Business Development
Mobile: +91 9820425332
Rushabh Shinde | Sales Engineer
Mobile: +91 9167442098

